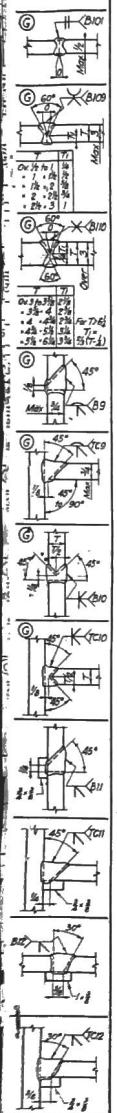
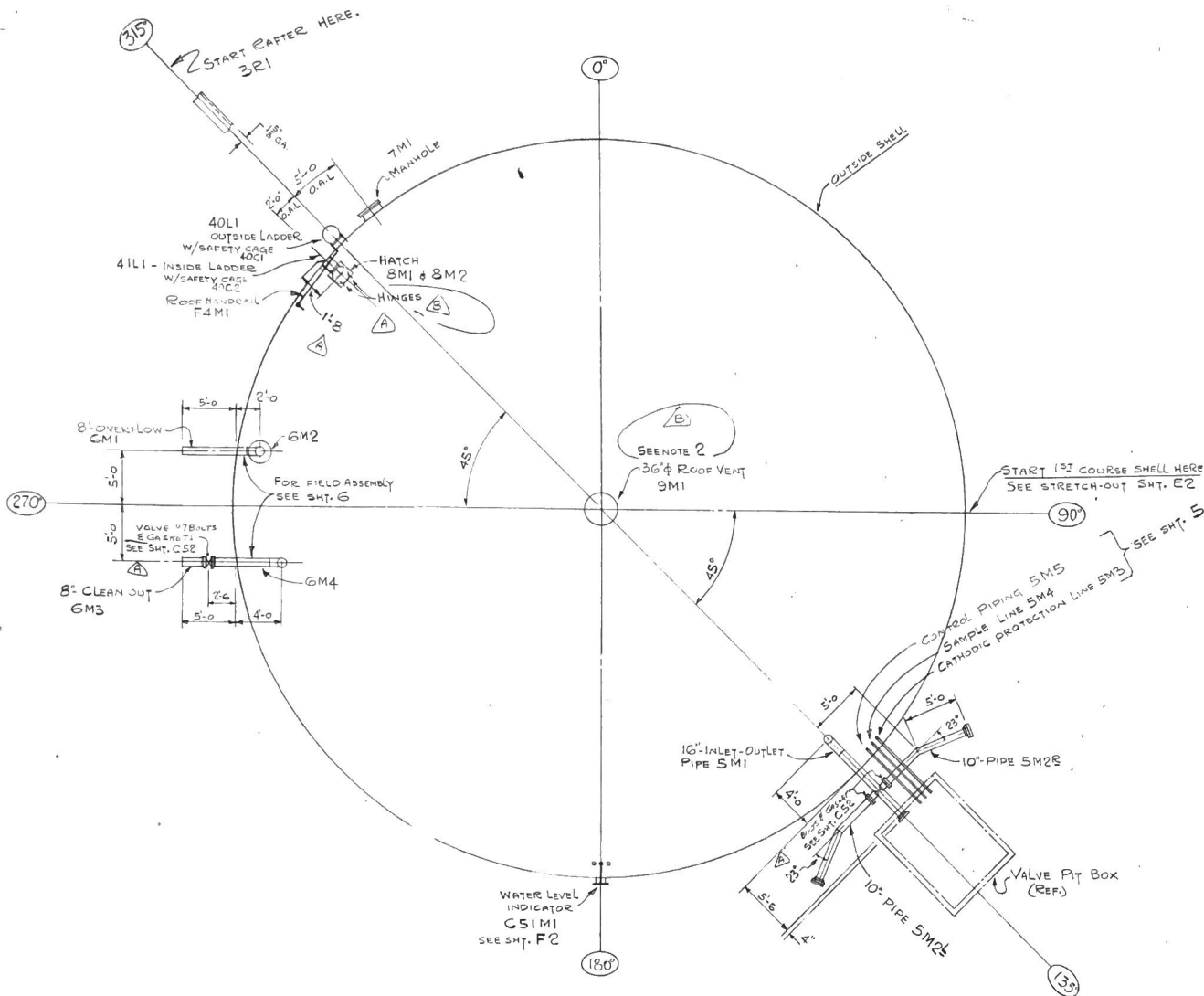


LIST OF DRAWINGS

DWG. NO.	DESCRIPTION
E1	ORIENTATION OF FITTINGS
E2	SHELL ERECTION
E3	BOTTOM ERECTION
E4	ROOF ERECTION
E5	SHELL X-RAY
1	BOTTOM FITS.
2	ROOF FITS.
3	STRUCTURAL SUPPORTS
4	INS. AND OUTS. LADDER
5	16" INLET-OUTLET DETAILS
6	CLEAN-OUT AND OVERFLOW
7	SHELL MANHOLE
8	ROOF HATCH
9	ROOF VENT
F1	SHELL FITS DETAILS
F2	LIQUID LEVEL GAGE DETAILS
F3	TOP ANGLE DETAILS
F4	ROOF HANDRAIL
C51	LIQUID LEVEL GAGE SPECIF.
C52	FIELD BOLTS & WAGERS
E52	FIELD LOCATION OF BOLTS



NOTES.

1. FABRICATION, INSPECTION AND TESTING SHALL BE IN ACCORDANCE WITH CUST. SPEC. H.U.D. PROJECT NO WS-6-05-0284 AND AWWA D-100-65, APPENDIX C.
2. RAFTERS INTERFERENCE. PROTECT RAFTERS WHEN CUTTING VENT ROOF OPENING.

SCHLAIN ASSOCIATES
 E1 Schramm
 Approved as Noted
 Make Corrections & Resubmit
 Not Approved
 Twain Harte
 Approved as Noted
 Make Corrections & Resubmit
 Not Approved
 Checking is only for general conformance with the design concept of the project and general compliance with the information given in the contract documents. Any action shown is subject to the requirements of the plans and specifications. Contractor is responsible for dimensions which shall be confirmed and corrected at the job site; fabrication processes and techniques of construction; coordination of his work with that of all other trades; and the satisfactory performance of his work.
 By: *[Signature]*

TUOLUMNE COUNTY WATER DIST. NO 1
 TWAIN HARTE, CALIF.
 66 FT. DIA. X 40 FT. HI. WATER STORAGE TANK
ORIENTATION OF FITTINGS



#1 M.C. WATER TANK CONSTRUCTION PLANS!



FABRICATION ASSIGNED TO: **FRESNO**

DRAWN BY: **S.C. S.B.**

MADE BY: **B.K. SANDERS** CHECKED BY: **N.B.S. DATE: 4-24-66**

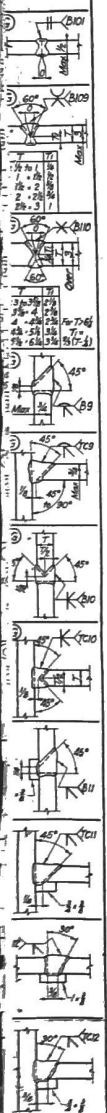
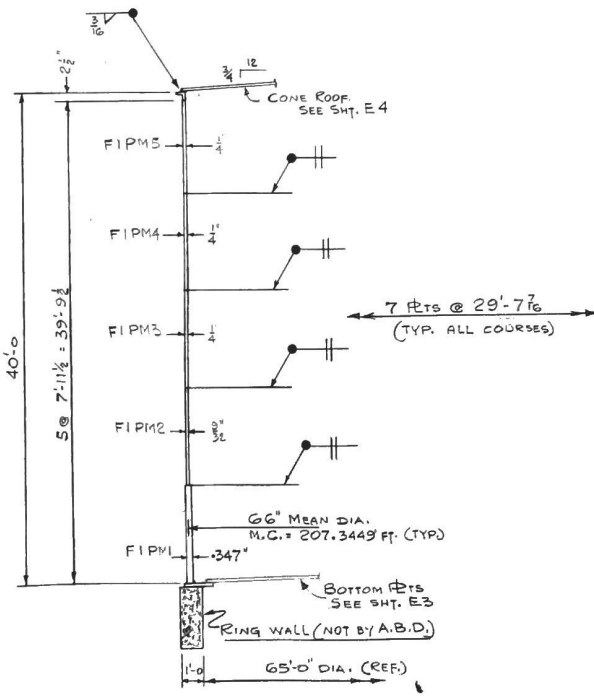
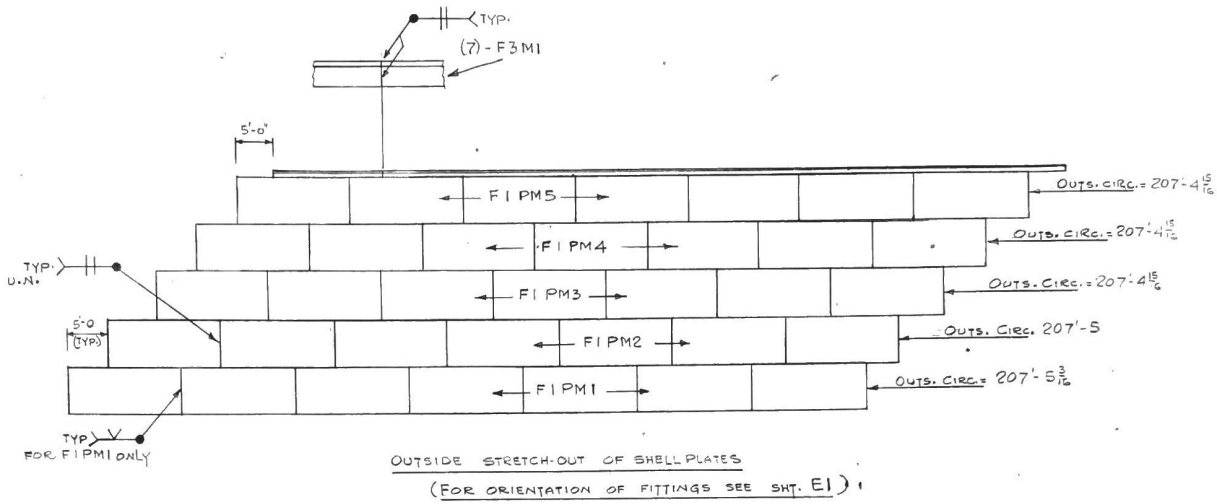
IN CHARGE OF: **E.L. KATZLICH**

F	
E	
D	
C	
B	
A	

ORDER NO. **K3404** SHEET NO. **E1**

REVISIONS

TWC #202



Check and before welding toward side note in drawing sheet. Do not specify welding process in drawing unless required by job specification.

SCHULIN ASSOCIATES
 E1 Substrate
 Approved As Noted
 Make Corrections & Resubmit
 Not Approved
 Twain Harte
 Checking is only for general conformance with the design of the project and general cooperation with the information given in the contract documents. The architect shows is subject to the requirements of the plans and specifications. Contractor is responsible for dimensions which shall be confirmed and corrected at the job site; fabrication processes and techniques of construction; coordination of his work with that of all other trades and the satisfactory performance of his work.
 By: *[Signature]*

TUOLUMNE COUNTY WATER DISTRICT
 TWAIN HARTE, CALIFORNIA
 66 FT. DIA. X 40 FT. HIGH WATER STORAGE TANK

SHELL Rts ASSEMBLY

FOR NOTES SEE SHT. E1

FOR SHELL X-RAY REQUIREMENTS
 SEE SHT. E5

FIELD WELD ROD
 SEE BC S-IT 51
 610-105 CARBON STEEL



REGISTERED CIVIL ENGINEER
 G.S. PRESTON
 No. C10980
 STATE OF CALIFORNIA

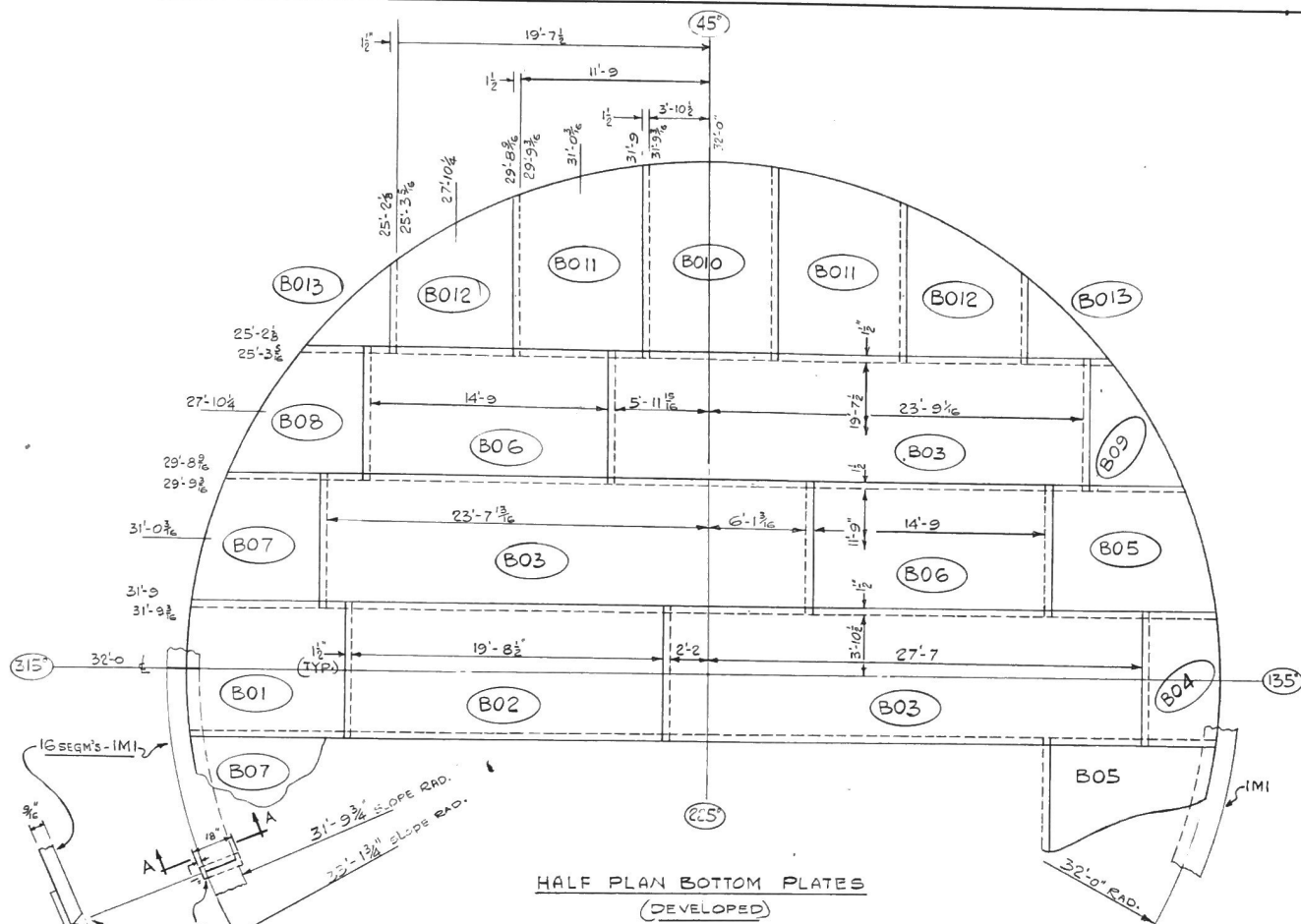
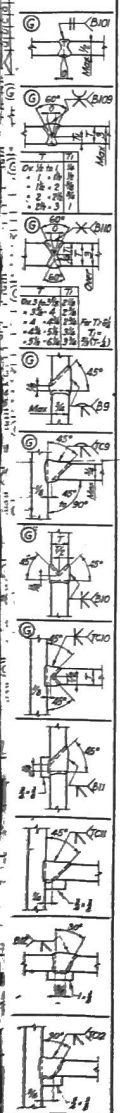
AMERICAN BRIDGE
 Division of United States Steel Corporation

PROJECT OWNER ASSIGNED TO: **FRESNO**
 DRAWING MADE BY: **S.O.S.F.**
 MADE BY: **RK**
 IN CHARGE OF: **M.G. KATNICH**

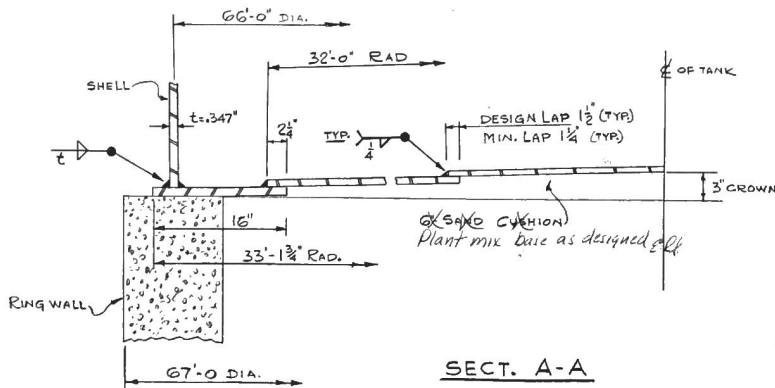
E	
D	
C	
B	
A	

REVISIONS

ORDER NO. **K3404** SHEET NO. **E2**



HALF PLAN BOTTOM PLATES
(DEVELOPED)



SECT. A-A

NOTES.
1. FABRICATION, INSPECTION AND TESTING SHALL BE IN ACCORDANCE WITH CUST. SPEC. H.U.D. PROJECT NO WS-G-05-0284 AND AWWA D-100-GS APPENDIX C.

SCHEIN ASSOCIATES
 Approved As Noted
 Make Corrections & Resubmit
 Not Approved

Checking is only for general conformance with the design concepts of the project and general compliance with the information given in the contract documents. No action shall be subject to the requirements of the plans and specifications. Contractor is responsible for and shall be held liable for any errors and omissions which shall be corrected at the job site.

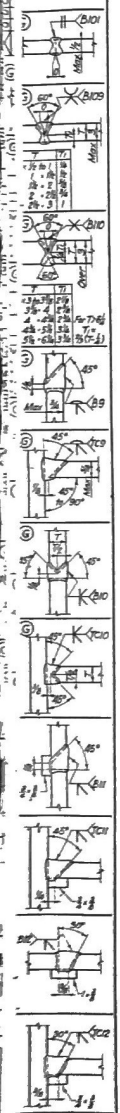
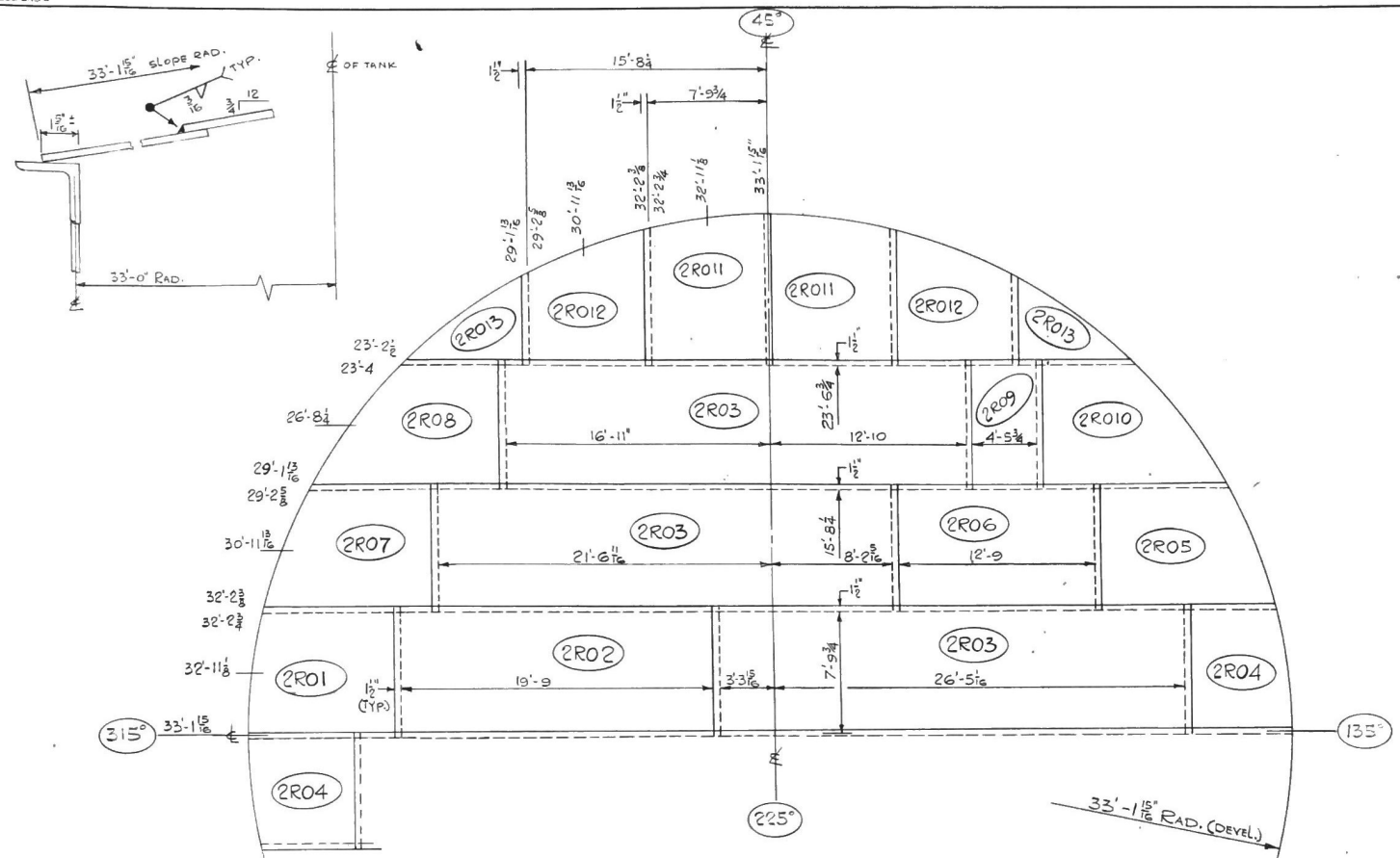
TUOLUMNE COUNTY WATER DISTRICT NO. 1
 TWAIN HARTE, CALIF.
 66 FT. DIA. X 6 FT. HI. WATER STORAGE TANK
 BOTTOM PLATE ERECTION



FIELD WELD ROD
 SEC BC SHY 51
 383 LLS CARBON STEEL

REVISIONS	NO.	DATE	BY	APP.

PROJECT NO. K3404
 SHEET NO. E3



HALF PLAN CONE ROOF
(DEVELOPED)

ALL PLATES 96" WIDE x 3/16" THK.
DESIGN LAP = 1 1/2"
MIN. FIELD LAP = 1"

NOTES.
1. FABRICATION, INSPECTION AND TESTING SHALL BE IN ACCORDANCE WITH CUST. SPEC. H.U.D. PROJECT # WS-6-05-0284 AND AWWA D-100-65 APPENDIX C.

SCHELL ASSOCIATES
Checked by: [Signature]
Approved As Noted []
Made Corrections & Resubmit []
Not Approved []

Checking is only for general conformance with the design concept of the work and does not constitute a warranty of general compliance with the contract documents. The contractor is subject to the provisions of the contract documents. Construction shall be in accordance with the contract documents and the contractor shall be responsible for the satisfactory performance of his work.

TULUMNE COUNTY WATER DIST. #1
TWIN HART, CALIF.
85 FT. DIA. x 40 FT. HI. WATER STORAGE TANK
ROOF R ERECTION



REVISIONS

F	
E	
D	
C	
B	
A	

PROJECT NO. K3404
JOB NO. E4



WELD WELD ROD
EPL 80 CWT S1
120 LBS CARBON STEEL

APPENDIX A

Procedures for Examination of Butt-Welded Shell Joints for Which Complete Penetration and Fusion Are Specified Radiographic Testing

Sec. A1 Applications



Sec. A4 Radiographic Symbols

Sec. A5 Identification Markers

Sec. A10 Reference Marker

Sec. A11 Submission of Radiographs

Sec. A12 Radiographic Standards

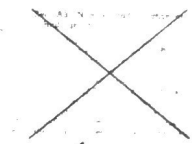
Sec. A13 Repair of Defective Welds

Sec. A14 Record of Radiographic Examination

(FOR FIGURES SEE ANWWA STD D 100-65)

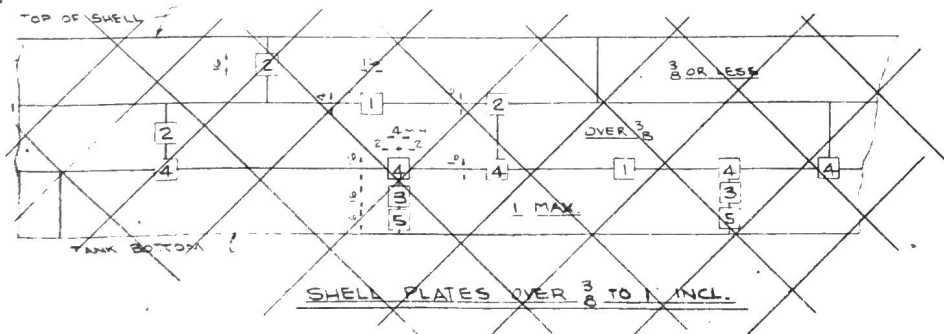
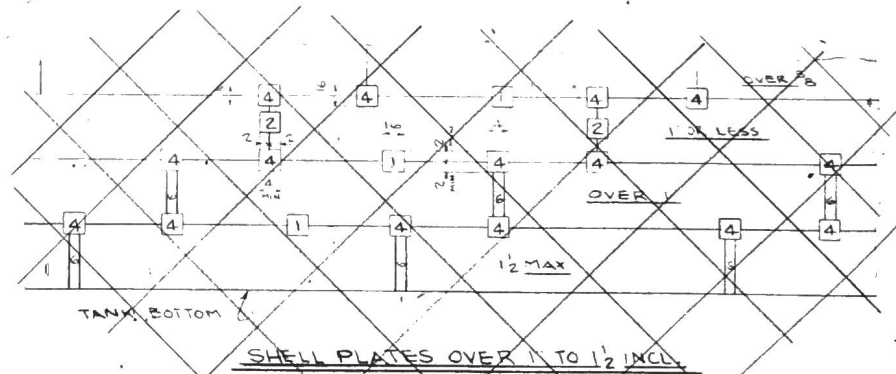
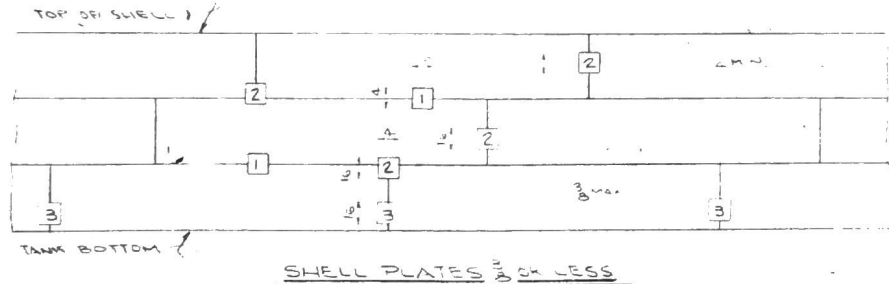
NOTES:

1. HORIZONTAL SPOT X-RAY IN ACCORDANCE WITH AWWA STD D-100-65 APPENDIX 'A' & APPENDIX 'C'. ONE IN FIRST 10 FT. AND ONE IN EACH 100 FT THERE AFTER WITHOUT REGARD TO NUMBER OF WELDERS OR WELDING OPERATORS
2. VERTICAL SPOT X-RAY IN ACCORDANCE WITH AWWA STD D-100-65 APPENDIX 'A' AND APPENDIX 'C'. ONE IN FIRST 10 FT. AND ONE IN EACH 100 FT THERE AFTER WITHOUT REGARD TO NUMBER OF WELDERS OR WELDING OPERATORS, 25% OF WHICH ARE TO BE AT JUNCTIONS OF VERTICAL & HORIZONTAL JOINTS WITH A MINIMUM OF TWO PER TANK.
3. ONE RANDOM SPOT X-RAY SHALL BE TAKEN IN EACH VERTICAL JOINT IN LOWEST COURSE.
4. SPOT X-RAY ALL INTERSECTIONS
5. VERTICAL SPOT X-RAY IN EACH VERTICAL SEAM AS CLOSE TO BOTTOM AS PRACTICABLE
6. COMPOSITE X-RAY OF EACH VERTICAL SEAM



THIS PARA. SUPERCEDED BY APPENDIX C-66E NOTES

EXCERPT FROM ANWWA STD D100-65 (AS REFERRED TO IN ANWWA STD D 100-65 APPENDIX 'C')



DESIGN APPROVAL

By Submits _____ Date _____

Approved As Noted

Make Corrections & Resubmit

Not Approved

Checking is only for general conformity with the design. The contractor is responsible for the general conformity of the work with the contract drawings and specifications subject to the approval of the plans and specifications. Check for general conformity and compliance with the contract drawings and specifications. Do not check for compliance with the contract drawings and specifications.

 Contracting Party

TUOLUMNE COUNTY WATER DISTRICT #1
 TWIN HARTS, CALIFORNIA
 65 FT. DIA. 40 FT. H. ANWWA WATER STORAGE TANK

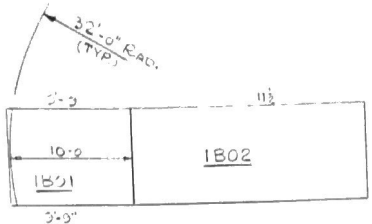
SHELL X-RAY REQUIREMENTS
 ANWWA STD D-100-65
 APPENDIX 'C'



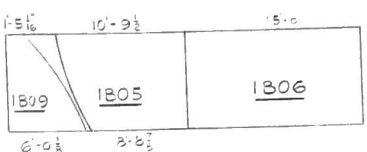
U.S. American Bridge
 PREPARED BY
 G.S. PRESTON
 No. C10980
 STATE OF CALIFORNIA

K3404 | E5

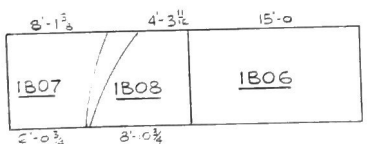
19000.639-X



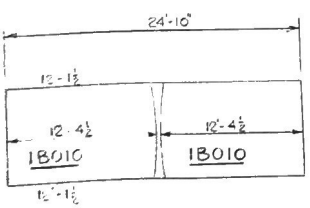
1 PL. 96" x 1/2" x 30'-0"
CUTTING DIAGR. NO. 1



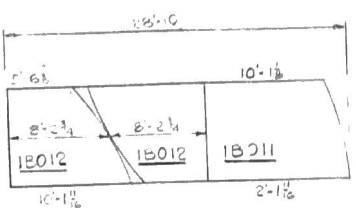
2 PL. 96" x 1/2" x 30'-0"
CUTTING DIAGR. NO. 2



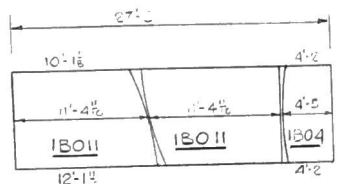
2 PL. 96" x 1/2" x 30'-0"
CUTTING DIAGRAM NO. 3



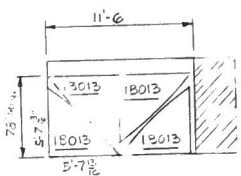
1 PL. 96" x 1/2" x 30'-0"
CUTTING DIAGR. NO. 4



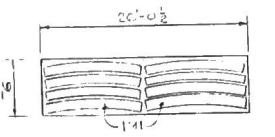
2 PL. 96" x 1/2" x 30'-0"
CUTTING DIAGR. NO. 5



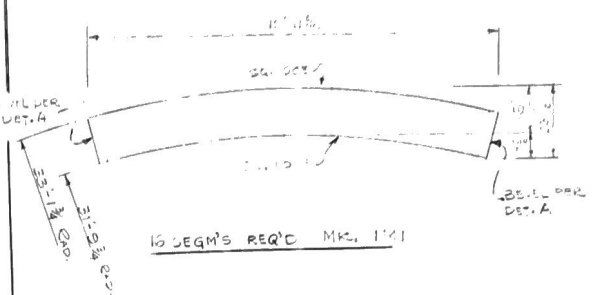
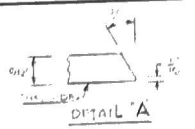
1 PL. 96" x 1/2" x 27'-0"
CUTTING DIAGR. NO. 6



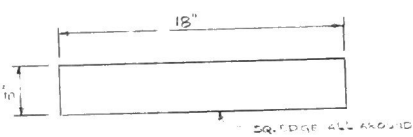
1 PL. 96" x 15'-0"
CUTTING DIAGR. NO. 7



1 PL. 96" x 15'-0"
CUTTING DIAGR. NO. 8



15 SEGM'S REQ'D MK. 1M1



COPPER BACK-UP BAR 1/2"
TO R.O. OF MK. 1M1

NOTES:
1. FABRICATION, INSPECTION AND TESTING SHALL BE IN ACCORDANCE WITH CUST. SPEC. H.U.D. PROJECT NO. W-6-05-0284 AND ANWA D-100-05 APPENDIX C

NO.	DESCRIPTION	QTY	UNIT	PRICE	TOTAL	DATE	BY	CHKD.
1								
2								
3								
4								
5								
6								
7								
8								
9								
10								
11								
12								
13								
14								
15								
16								
17								
18								
19								
20								
21								
22								
23								
24								
25								
26								
27								
28								
29								
30								
31								
32								
33								
34								
35								
36								
37								
38								
39								
40								
41								
42								
43								
44								
45								
46								
47								
48								
49								
50								
51								
52								
53								
54								
55								
56								
57								
58								
59								
60								
61								
62								
63								
64								
65								
66								
67								
68								
69								
70								

TUOLUMNE COUNTY WATER DIST. NO. 1
TWIN HART, CALIF.
66 FT. DIA. 40 FT. HI. WATER STORAGE TANK
BOTTOM DET'S DETAILS

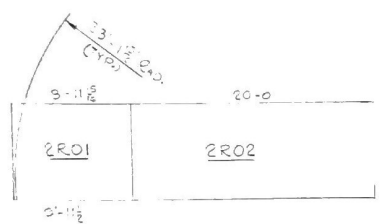


NO.	DESCRIPTION	QTY	UNIT	PRICE	TOTAL
1					
2					
3					
4					
5					
6					
7					
8					
9					
10					
11					
12					
13					
14					
15					
16					
17					
18					
19					
20					
21					
22					
23					
24					
25					
26					
27					
28					
29					
30					
31					
32					
33					
34					
35					
36					
37					
38					
39					
40					
41					
42					
43					
44					
45					
46					
47					
48					
49					
50					
51					
52					
53					
54					
55					
56					
57					
58					
59					
60					
61					
62					
63					
64					
65					
66					
67					
68					
69					
70					

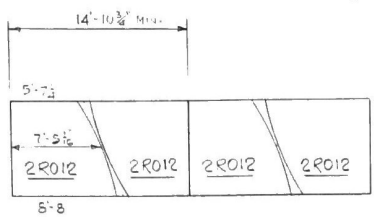
Uss American Bridge
Division of United States Steel Corporation

DESIGNED BY: **FRESNO**
DRAWN BY: **P. K. KATHAN**

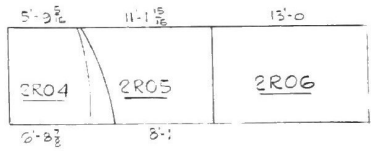
NO. **K3404**



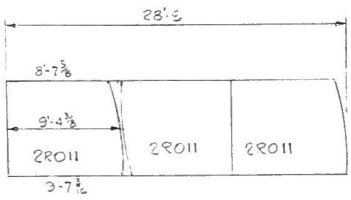
2 Pts. $36'' \times \frac{3}{16}'' \times 30'-0''$
CUTTING DIAGR. NO. 1



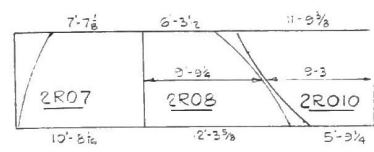
1 Pt. $30'' \times \frac{3}{16}'' \times 30'-0''$
CUTTING DIAGR. NO. 5



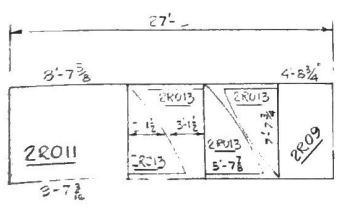
2 Pts. $36'' \times \frac{3}{16}'' \times 30'-0''$
CUTTING DIAGR. NO. 2



1 Pt. $36'' \times \frac{3}{16}'' \times 30'-0''$
CUTTING DIAGR. NO. 6



2 Pts. $36'' \times \frac{3}{16}'' \times 30'-0''$
CUTTING DIAGRAM NO. 3



1 Pt. $30'' \times \frac{3}{16}'' \times 30'-0''$
CUTTING DIAGR. NO. 4

LINE NO.	ITEM	QTY	UNIT	PRICE	TOTAL	REMARKS
1	6 PL	36	3/16	30.0	2803	
2						
3						
4	0	36	3/16	9.11	2901	See CD
5	2 PL	36	3/16	20.2	2802	
6						
7	2 PL	36	3/16	6.83	2804	See CD
8	2 PL	36	3/16	11.11	2805	
9	2 PL	36	3/16	3.0	2806	
10						
11	2 PL	36	3/16	0.86	2807	See CD
12	2 PL	36	3/16		2808	
13	2 PL	36	3/16		2809	
14						
15						
16	1 PL	36	3/16		2810	
17						
18						
19						
20						
21						
22						
23						
24						
25						
26						
27						
28						
29						
30						
31						
32						
33						
34						
35						
36						
37						
38						
39						
40						
41						
42						
43						
44						
45						
46						
47						
48						
49						
50						
51						
52						
53						
54						
55						
56						
57						
58						
59						
60						
61						
62						
63						
64						
65						
66						
67						
68						
69						
70						

All Pts. — A283-C

Approved as Shown

Make Alterations as Indicated

Not Approved

NOTES
1. FABRICATION, INSPECTION AND TESTING SHALL BE IN ACCORDANCE WITH UST. SPEC. H.U.D. PROJECT NO. 10-6-05-0284 AND ANNA D-100-65 APPENDIX C

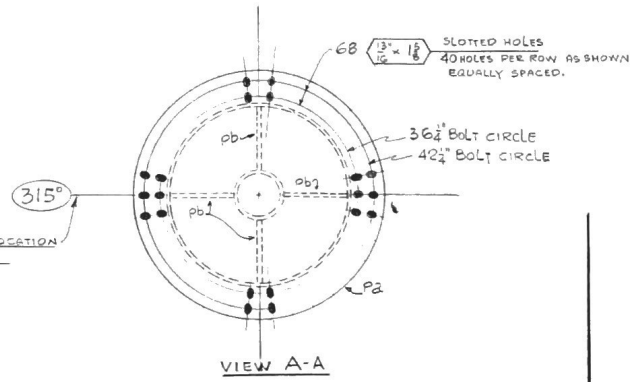
SHIPMENT 408E
SHIP CONTACT SURFACES



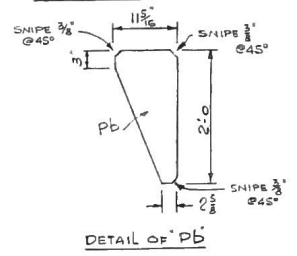
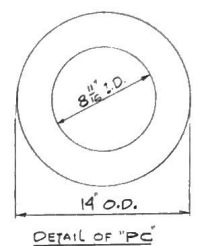
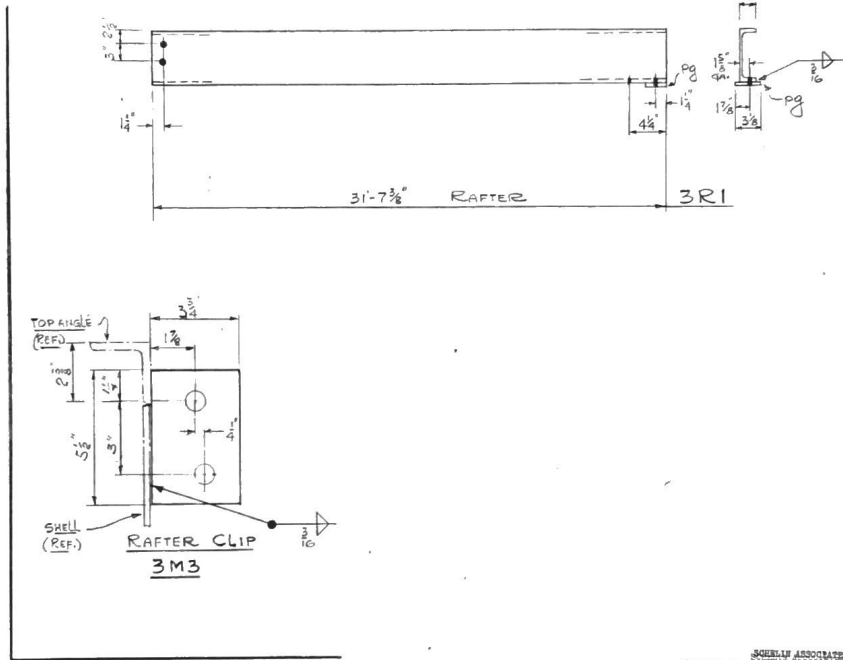
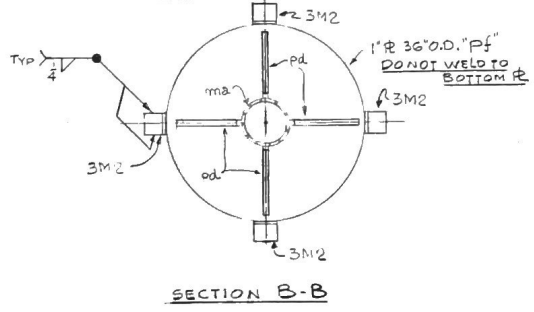
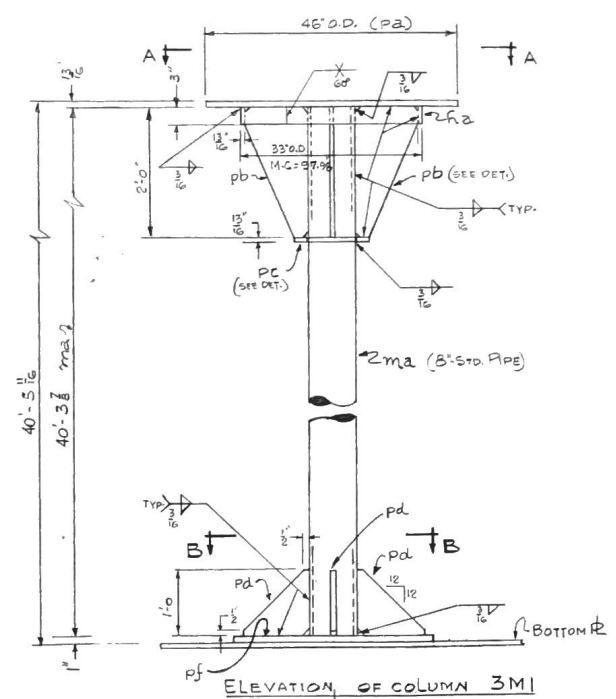
NO.	DATE	BY	REVISION



34 K3404 2



FOR FIELD LOCATION SEE SHT. E1



FOR NOTES SEE SHT. 1

ITEM NO.	QUANTITY	MATERIAL	DESCRIPTION	UNIT	REMARKS	DATE
1	1	COLUMN			3M1 46' x 4'	
2	1	PIPE 8\"/>				
3	1	PL 3\"/>				
4	1	PL 4\"/>				
5	1	PL 3\"/>				
6	4	PL 1\"/>				
7	1	PL 1\"/>				
8	4	PL 1\"/>				
9	1	PL 3\"/>				
10						
11						
12						
13	4	L 4\"/>				
14						
15	34	FL 3\"/>				
16						
17						
18	34	CH 10\"/>				
19	1	2\"/>				
20						
21						
22						
23						
24						
25						
26						
27						
28						
29						
30						
31						
32						
33						
34						
35						
36						
37						
38						
39						
40						
41						
42						
43						
44						
45						
46						
47						
48						
49						
50						
51						
52						
53						
54						
55						
56						
57						
58						
59						
60						
61						
62						
63						
64						
65						
66						
67						
68						
69						
70						

SMITH & BROWN ASSOCIATES
 APPROVED AS NOTED
 MADE CORRECTIONS & REVISIONS
 NOT APPROVED

ALL BOLT HOLES 1/2\"/>
 UNLESS NOTED

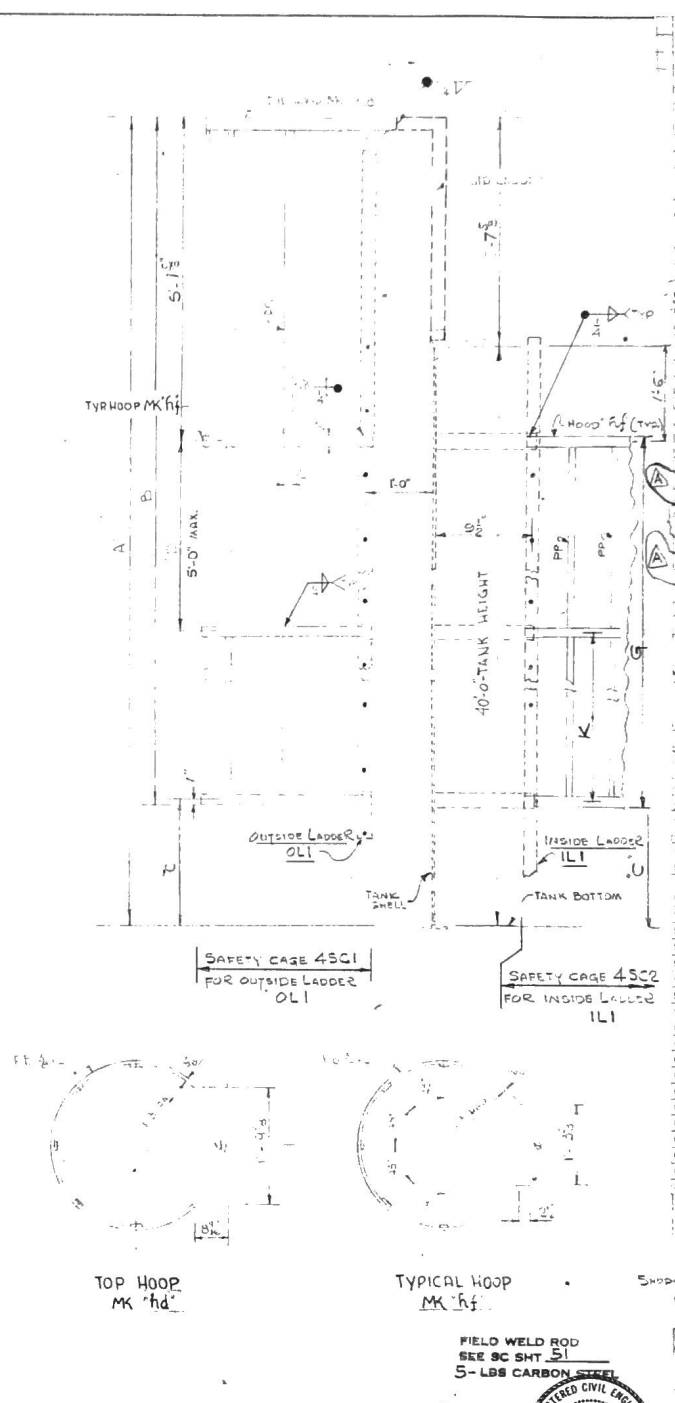
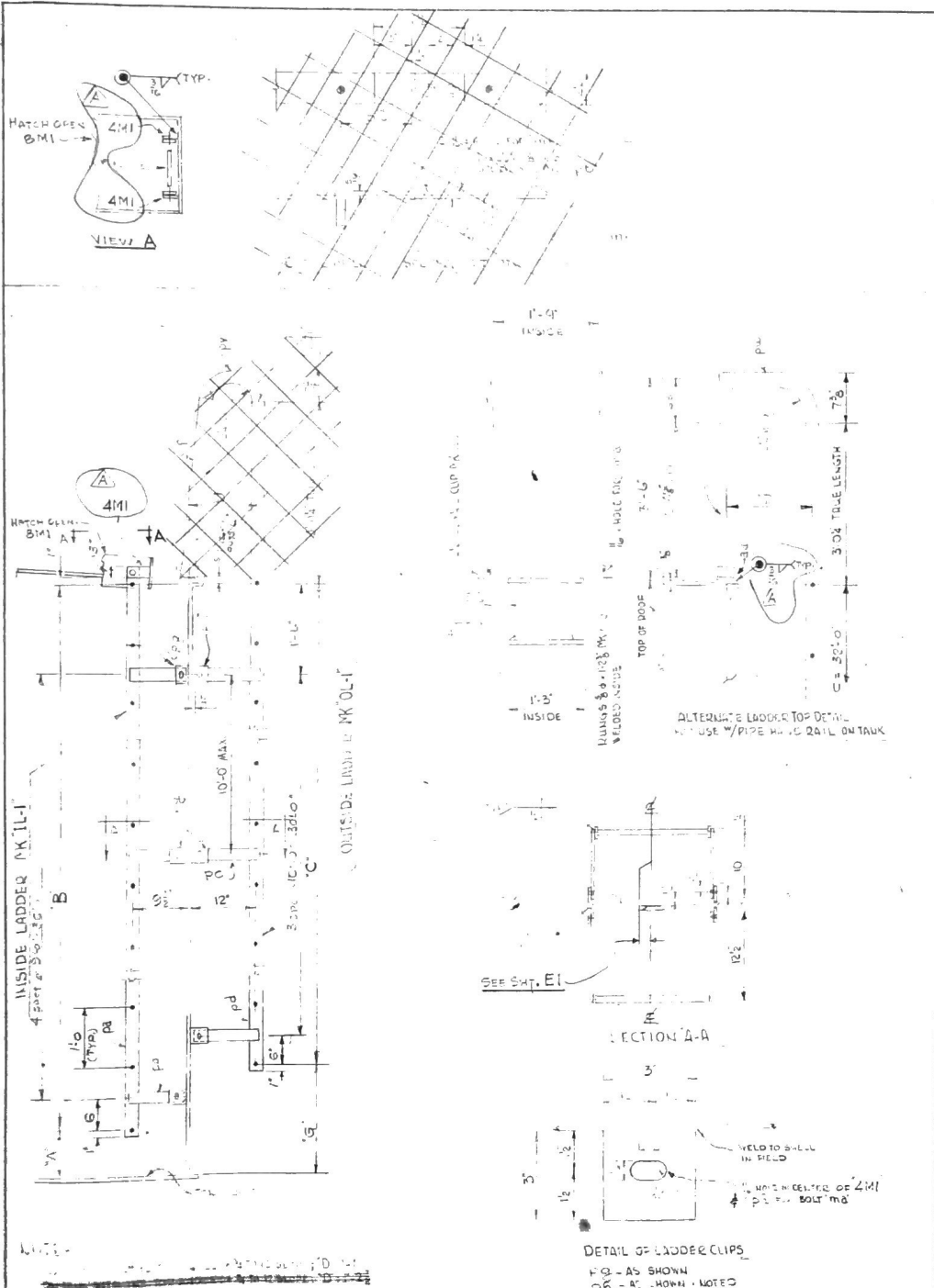
TUOLUMNE COUNTY WATER DISTRICT
 TWIN HARTS, CALIF.
 66 FT. DIAM 40 FT. HI. WATER STORAGE TANK
 COLUMN DETAILS



PAR. NO.	REV.	DATE	BY	CHKD.
1				
2				
3				
4				
5				

USS American Bridge
 Division of United States Steel Corporation
 FREEDNO
 SO. S. P.
 M.G. KATNICH
 K3404 13

Vertical strip of drawings and notes on the left margin, including various detail views and specifications.



ITEM NO.	DESCRIPTION	QUANTITY	UNIT	REMARKS
1	OUTSIDE LADDER	1	EA	
2	PA	35	EA	
3	PB	1	EA	
4	PC	1	EA	
5	PD	1	EA	
6	PE	1	EA	
7	PF	1	EA	
8	PG	1	EA	
9	PH	1	EA	
10	PI	1	EA	
11	PJ	1	EA	
12	PK	1	EA	
13	PL	1	EA	
14	PM	1	EA	
15	PN	1	EA	
16	PO	1	EA	
17	PP	1	EA	
18	PQ	1	EA	
19	PR	1	EA	
20	PS	1	EA	
21	PT	1	EA	
22	PV	1	EA	
23	PW	1	EA	
24	PX	1	EA	
25	PY	1	EA	
26	PZ	1	EA	
27	QA	1	EA	
28	QB	1	EA	
29	QC	1	EA	
30	QD	1	EA	
31	QE	1	EA	
32	QF	1	EA	
33	QG	1	EA	
34	QH	1	EA	
35	QI	1	EA	
36	QJ	1	EA	
37	QK	1	EA	
38	QL	1	EA	
39	QM	1	EA	
40	QN	1	EA	
41	QO	1	EA	
42	QP	1	EA	
43	QQ	1	EA	
44	QR	1	EA	
45	QS	1	EA	
46	QT	1	EA	
47	QU	1	EA	
48	QV	1	EA	
49	QW	1	EA	
50	QX	1	EA	
51	QY	1	EA	
52	QZ	1	EA	
53	RA	1	EA	
54	RB	1	EA	
55	RC	1	EA	
56	RD	1	EA	
57	RE	1	EA	
58	RF	1	EA	
59	RG	1	EA	
60	RH	1	EA	
61	RI	1	EA	
62	RJ	1	EA	
63	RK	1	EA	
64	RL	1	EA	
65	RM	1	EA	
66	RN	1	EA	
67	RO	1	EA	
68	RP	1	EA	
69	RQ	1	EA	
70	RR	1	EA	

SAFETY CAGE 45C1 FOR OUTSIDE LADDER OLI

SAFETY CAGE 45C2 FOR INSIDE LADDER ILI

FIELD WELD ROD SEE SC SHT 51 5-LBS CARBON STEEL

REGISTERED CIVIL ENGINEER G.S. PRESTON No. C10880 STATE OF CALIFORNIA

AMERICAN BRIDGE DIVISION OF U.S. UNITED STATES STEEL

8500 W. 140th St. Overland Park, KS 66204

816-491-4000

816-491-4001

816-491-4002

816-491-4003

816-491-4004

816-491-4005

816-491-4006

816-491-4007

816-491-4008

816-491-4009

816-491-4010

816-491-4011

816-491-4012

816-491-4013

816-491-4014

816-491-4015

816-491-4016

816-491-4017

816-491-4018

816-491-4019

816-491-4020

816-491-4021

816-491-4022

816-491-4023

816-491-4024

816-491-4025

816-491-4026

816-491-4027

816-491-4028

816-491-4029

816-491-4030

816-491-4031

816-491-4032

816-491-4033

816-491-4034

816-491-4035

816-491-4036

816-491-4037

816-491-4038

816-491-4039

816-491-4040

816-491-4041

816-491-4042

816-491-4043

816-491-4044

816-491-4045

816-491-4046

816-491-4047

816-491-4048

816-491-4049

816-491-4050

816-491-4051

816-491-4052

816-491-4053

816-491-4054

816-491-4055

816-491-4056

816-491-4057

816-491-4058

816-491-4059

816-491-4060

816-491-4061

816-491-4062

816-491-4063

816-491-4064

816-491-4065

816-491-4066

816-491-4067

816-491-4068

816-491-4069

816-491-4070

816-491-4071

816-491-4072

816-491-4073

816-491-4074

816-491-4075

816-491-4076

816-491-4077

816-491-4078

816-491-4079

816-491-4080

816-491-4081

816-491-4082

816-491-4083

816-491-4084

816-491-4085

816-491-4086

816-491-4087

816-491-4088

816-491-4089

816-491-4090

816-491-4091

816-491-4092

816-491-4093

816-491-4094

816-491-4095

816-491-4096

816-491-4097

816-491-4098

816-491-4099

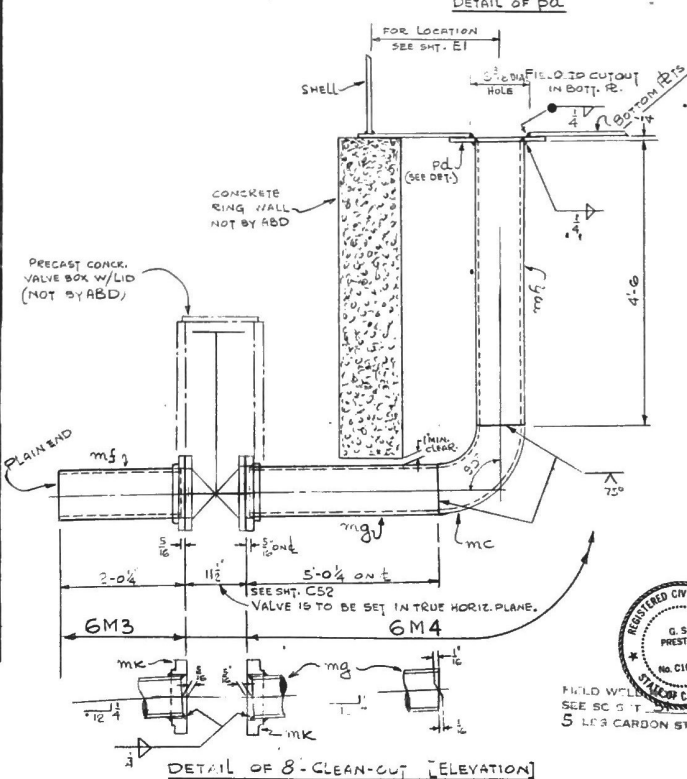
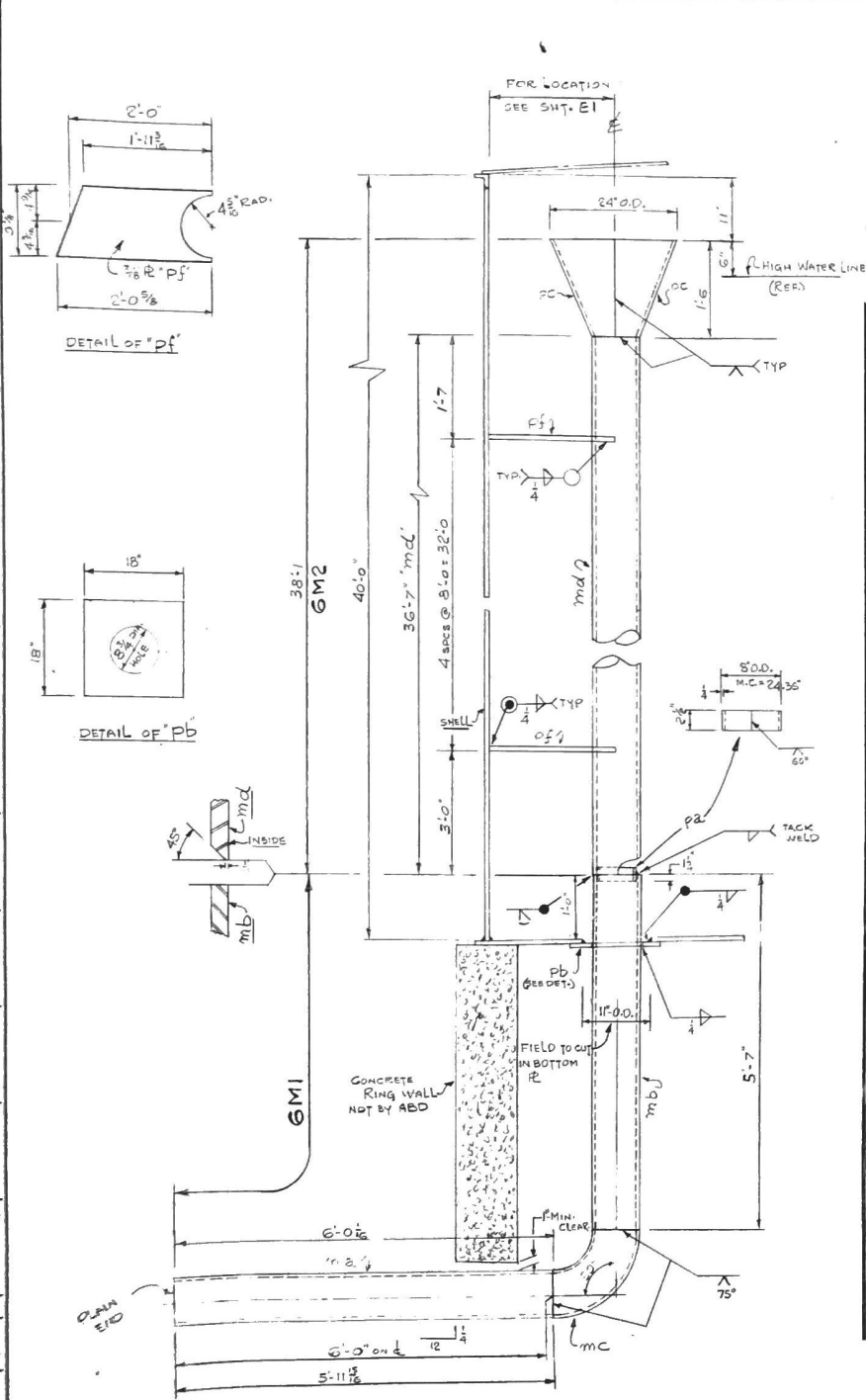
816-491-4100

DIMENSIONS						
TANK	A	B	C	D	E	F
40'-0"	43'-7 1/2"	35'-2 1/2"	8'-0"	4'-4 1/2"	B	30'-8"

FOR NOTES SEE SHT. 1

DIMENSIONS						
TANK	A	B	C	D	E	F
40'-0"	43'-7 1/2"	35'-2 1/2"	8'-0"	4'-4 1/2"	B	30'-8"

E1 K3404 1A



ITEM NO.	QUANTITY	DESCRIPTION	UNIT	MARK	PRICE	TOTAL	REMARKS
1	1	8\"/>					
2	1	8\"/>					
3	1	8\"/>					
4	1	8\"/>					
5	1	8\"/>					
6	1	8\"/>					
7	1	8\"/>					
8	1	8\"/>					
9	1	8\"/>					
10	1	8\"/>					
11	1	8\"/>					
12	1	8\"/>					
13	1	8\"/>					
14	1	8\"/>					
15	1	8\"/>					
16	1	8\"/>					
17	1	8\"/>					
18	1	8\"/>					
19	2	8\"/>					
20	5	8\"/>					
21	1	8\"/>					
22	1	8\"/>					
23	1	8\"/>					
24	1	8\"/>					
25	1	8\"/>					
26	1	8\"/>					
27	1	8\"/>					
28	1	8\"/>					
29	1	8\"/>					
30	1	8\"/>					
31	1	8\"/>					
32	1	8\"/>					
33	1	8\"/>					
34	1	8\"/>					
35	1	8\"/>					
36	1	8\"/>					
37	1	8\"/>					
38	1	8\"/>					
39	1	8\"/>					
40	1	8\"/>					
41	1	8\"/>					
42	1	8\"/>					
43	1	8\"/>					
44	1	8\"/>					
45	1	8\"/>					
46	1	8\"/>					
47	1	8\"/>					
48	1	8\"/>					
49	1	8\"/>					
50	1	8\"/>					
51	1	8\"/>					
52	1	8\"/>					
53	1	8\"/>					
54	1	8\"/>					
55	1	8\"/>					
56	1	8\"/>					
57	1	8\"/>					
58	1	8\"/>					
59	1	8\"/>					
60	1	8\"/>					
61	1	8\"/>					
62	1	8\"/>					
63	1	8\"/>					
64	1	8\"/>					
65	1	8\"/>					
66	1	8\"/>					
67	1	8\"/>					
68	1	8\"/>					
69	1	8\"/>					
70	1	8\"/>					

APPROVAL

Checked by: _____ Date: _____

Approved as Shown:

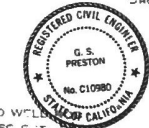
Make Corrections & Resubmit:

Not Approved:

Checking is a part of the professional responsibility of the engineer with the design and construction of the project and is not to be construed as a warranty of the work. The engineer shall be held liable for the work done and the satisfactory performance of the work.

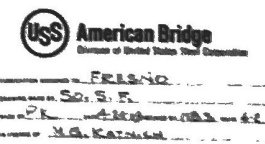
John J. [Signature]

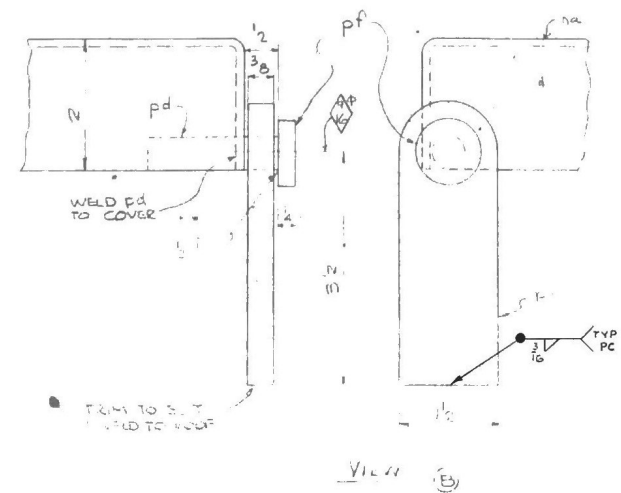
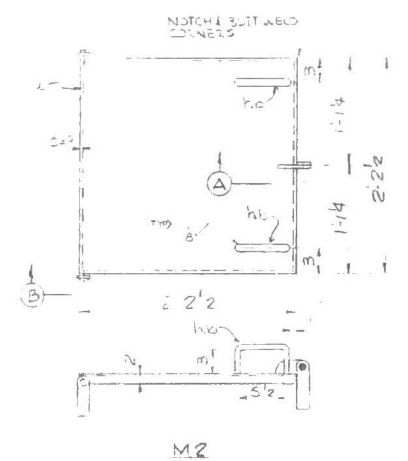
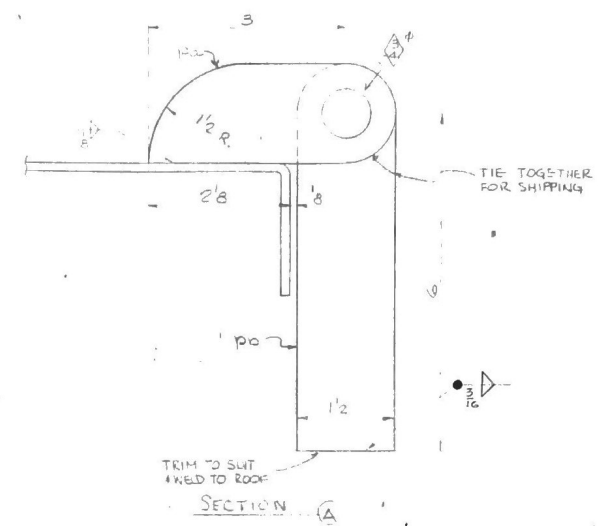
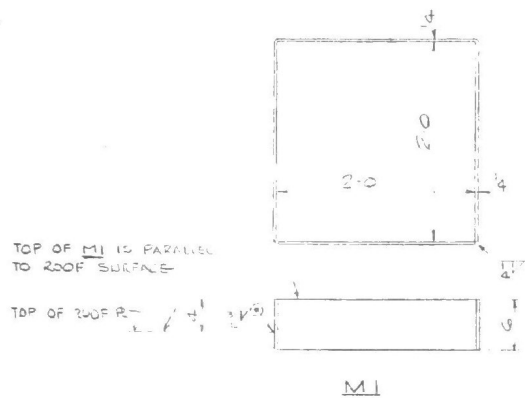
TUOLUMNE COUNTY WATER DISTRICT
 TWIN HARTE, CALIFORNIA
 66 FT. DIAM 40 FT. HIGH WATER STORAGE TANK
 CLEAN-OUT AND OVERFLOW DETAILS



SHOP NAME: NONE

REV.	DATE	BY	DESCRIPTION





SCHLAIN ASSOCIATES
 El Sobrante Twin Harte
 Approved As Noted
 Make Corrections & Resubmit
 Not Approved

Checking is only for general conformance with the design concept of the project and general compliance with the information given in the contract documents. No action shown in the contract documents or the plans and specifications. Contractor is responsible for all details which shall be confirmed and corrected at the job site. Verification processes shall be the responsibility of the contractor. The contractor shall coordinate all construction work with the other trades and shall be responsible for satisfactory performance of his work.

By: *Richard Schlain*

NEW WELL ROAD
 2-413 CARBON ST
 PRESTON
 REGISTERED CIVIL ENGINEER
 G. S. PRESTON
 No. C10980
 STATE OF CALIFORNIA

1	1	1	8 MI
2	2	2	42
3	3	3	
4	4	4	
5	5	5	
6	6	6	
7	7	7	
8	8	8	
9	9	9	
10	10	10	
11	11	11	
12	12	12	
13	13	13	
14	14	14	
15	15	15	
16	16	16	
17	17	17	
18	18	18	
19	19	19	
20	20	20	
21	21	21	
22	22	22	
23	23	23	
24	24	24	
25	25	25	
26	26	26	
27	27	27	
28	28	28	
29	29	29	
30	30	30	
31	31	31	
32	32	32	
33	33	33	
34	34	34	
35	35	35	
36	36	36	
37	37	37	
38	38	38	
39	39	39	
40	40	40	
41	41	41	
42	42	42	
43	43	43	
44	44	44	
45	45	45	
46	46	46	
47	47	47	
48	48	48	
49	49	49	
50	50	50	
51	51	51	
52	52	52	
53	53	53	
54	54	54	
55	55	55	
56	56	56	
57	57	57	
58	58	58	
59	59	59	
60	60	60	
61	61	61	
62	62	62	
63	63	63	
64	64	64	
65	65	65	

Shop: NONE

24 ROOF WATCH COVER

FRESNO
 S. S. F.
 N. G. KATZMAN

EI K5404 18

TUOLUMNE COUNTY WATER DISTRICT #1
 TWIN HARTE, CALIFORNIA
 66" DIA X 40 FT. HI. WATER STORAGE TANK